

10th March 2009

Dear Head teacher and PSHE Co-ordinator

Primary School Sex and Relationships Education Resource Evaluation

Two SRE resources have been used and evaluated in a pilot sample of 4 primary schools in North Halifax. The aim of the pilot was to encourage the delivery of excellent SRE in both Key Stages 1 and 2 using recommended schemes of work.

The pilot resources were chosen by a working group of professionals including teachers, school nurses, PSHE consultant and the SRE Development Officer.

Initially a variety of published and non-published primary SRE resources were sourced from around the country. These were reviewed by the working group and finally just two were selected for the pilot. A number of criteria were used to evaluate each resource:

- Inclusion of Ofsted learning outcomes
- Inclusion of recommendations from Sex and Relationship Education Guidance DFEE July 2000
- Ease of use
- Spiral curriculum, building up skills and information year on year
- Lesson plans for all year groups in Key Stage 1 and 2

Now that PSHE including SRE is to be made statutory across all Key Stages it is a good time for schools to review their SRE provision. I hope that the following recommendations will help with this process. The two selected were:

- **Supporting Sex and Relationship Education in the Primary School. Developed by Islington Healthy Schools**
 - six lesson plans for Key Stage 1
 - 14 lesson plans for Key Stage 2
 - Lots of relationships content
 - Based on Channel 4's "Living and Growing"
 - DVD material supports lesson plans

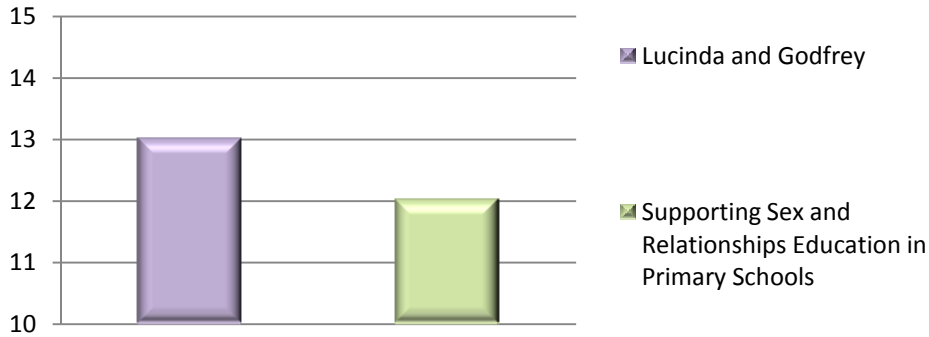
and

- **Godfrey and Lucinda. Developed by Hartlepool Teenage Pregnancy Partnership.**
 - 4 lesson plans for each year group from foundation to Year 6
 - Lots of relationships content
 - Story books to support lesson plans

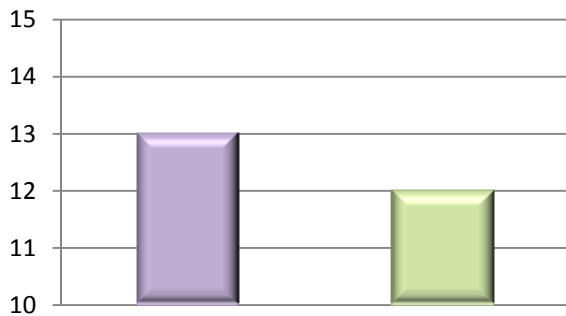
What the schools thought

We asked all teachers (**total 25**) the same questions about resources.

Which resource did you use?

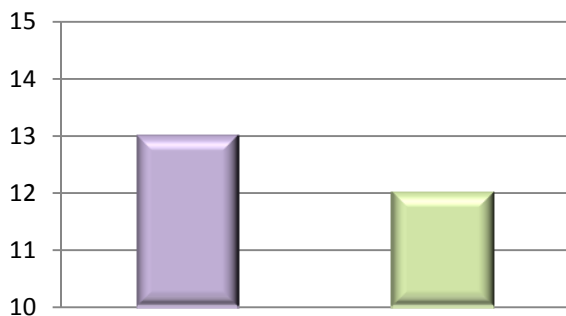


Were the instructions clear about how to deliver the lesson?



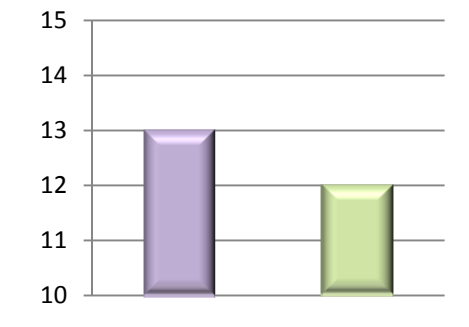
All teachers agreed that the instructions were clear. Some teachers commented that: “lessons were very clear and easy to follow”, “broken into stages and with differentiation clear”.

Did you find the lessons easy to deliver?



All teachers agreed that the lessons were easy to deliver. Some teachers commented that: “all of the resources/worksheets etc being readily available was a great help to ease delivery”, “yes, very clear with good progression”.

Do you feel your class responded well to the lessons?



All teachers felt that children in their class responded well to the lessons. Some teachers commented: “particularly scenario based activities”, “being a different class cohort; I thought they would struggle but the class was brilliant”, “children were very interested and the activities kept them engaged”, “some very mature questions”, “the boys especially did well when discussing periods and pregnancy”.

What do you think the pupils learned most from the lessons?

Here are some of the teachers’ responses:

“The lesson led to some great discussions and the children were able to further discuss issues at home with parents”.

“Learning about developing emotions”.

“Confidence to discuss SRE in class and post questions in SRE box”.

“About misconceptions they had with SRE”.

“An understanding of issues they had heard in the media”.

How was this evidenced?

Examples of evidence were:

Drawings, their responses to group discussions, which were very sensible and empathetic, all children joined in discussions and managed to give good examples, by the questions children were asking, children’s application of knowledge in other areas, several parents expressed how pleased they were with the lessons and the information given.

Comments from pupils about what they had learnt and enjoyed:

“All of it”

“That we all change and not just some people”

“I won’t accept rumours”

When asked how can you find out about other issues? – The pupil responded “By asking our parents”.

A big thank you to all staff and pupils, who took part in this project.

I have some sample copies of both resources which you are welcome to look at. Please contact me if you would like to preview or purchase a copy.

For further support and information about any aspect of SRE, please contact:

Caroline Swindells
SRE Development Officer
The Children's Resource Centre
2 Beverley Place
Boothtown
Halifax
HX3 0PF

Tel: 01422 369278 Fax: 01422 438783
caroline.swindells@calderdale.gov.uk

Caroline Naylor/Trevor Harris
Healthy Schools/PSHE Consultants
Heath Training & Development Centre
Free School Lane
Halifax
HX1 2PT

Tel: 01422 394174 Fax: 01422 394083
caroline.naylor@calderdale.gov.uk
trevor.harris@calderdale.gov.uk

Yours sincerely

Caroline Swindells